

S | Y

Seymour Yachts.

Exclusive Agent For:

**OYSTER 825 - CHAMPAGNE HIPPY
2014**

Listed By Tom Benson / www.seymouryachts.com / tom.benson@seymouryachts.com / +44 747 099 8422

S | Y

Seymour Yachts.

Introduction.

CHAMPAGNE HIPPY is one of the most remarkable yachts sailing the world today. She is hull number 2 of the ever popular Oyster 825 series and is truly unique, being the only yacht in the series to be built with the extended transom and as a four cabin layout, sleeping nine guests and three crew.

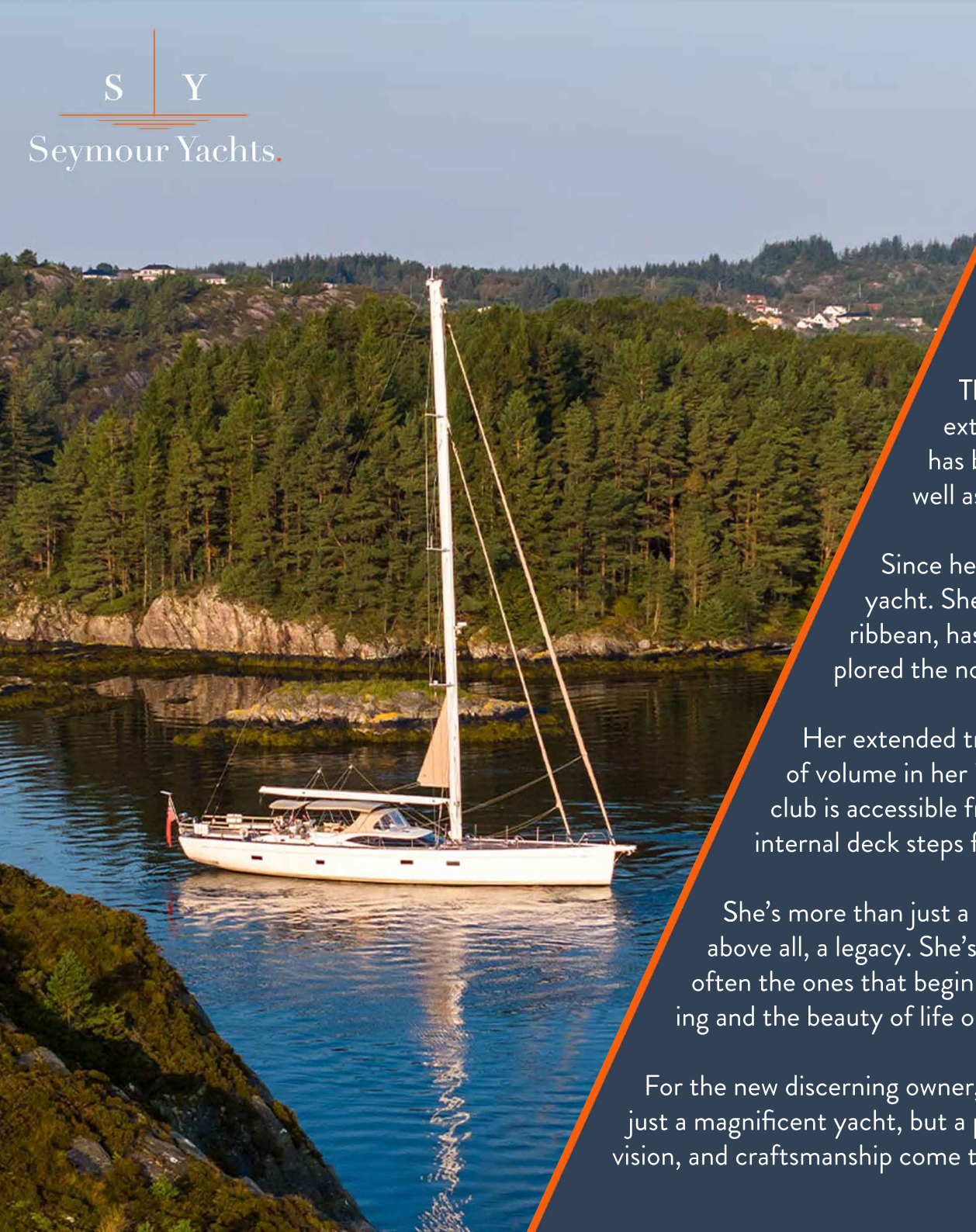
This phenomenal yacht was rebuilt in 2018 and underwent a further-extensive refit under her new ownership in 2022. Every inch of her has been updated, upgraded and enhanced to offer ultimate comfort as well as world-wide cruising performance.

Since her rebuild she has travelled far and wide as a very successful charter yacht. She has crossed the Atlantic six times, spent three winters in the Caribbean, has cruised the Balearics, Greece, Italy, France, and most recently explored the north, sailing the unforgettable Norwegian fjords.

Her extended transom is a masterpiece, creating a vast deck area, a huge amount of volume in her interior, and an immense beach club and storage area. The beach club is accessible from either the transforming ladder style hydraulic passerelle, or the internal deck steps for safe access when under sail.

She's more than just a yacht—she is a statement, a lifestyle, a symbol of adventure, and above all, a legacy. She's a yacht for those who understand that the greatest journeys are often the ones that begin with a challenge. A yacht for those who appreciate the joy of sailing and the beauty of life on the ocean.

For the new discerning owner, CHAMPAGNE HIPPY offers the rare opportunity to own not just a magnificent yacht, but a part of history. She's a symbol of what's possible when resilience, vision, and craftsmanship come together to create something truly extraordinary.

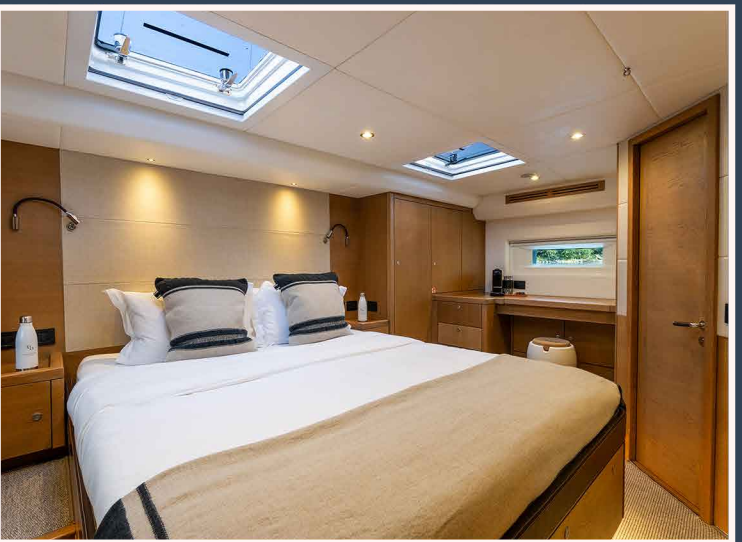


S | Y
Seymour Yachts

S/Y CHAMPAGNE HIPPY



€3,495,000 VAT Paid



S | Y

Seymour Yachts.

Video



S | Y

Seymour Yachts.





S | Y

Seymour Yachts



S | Y

Seymour Yachts.



S | Y

Seymour Yachts.





S | Y

Seymour Yachts.



S | Y

Seymour Yachts.





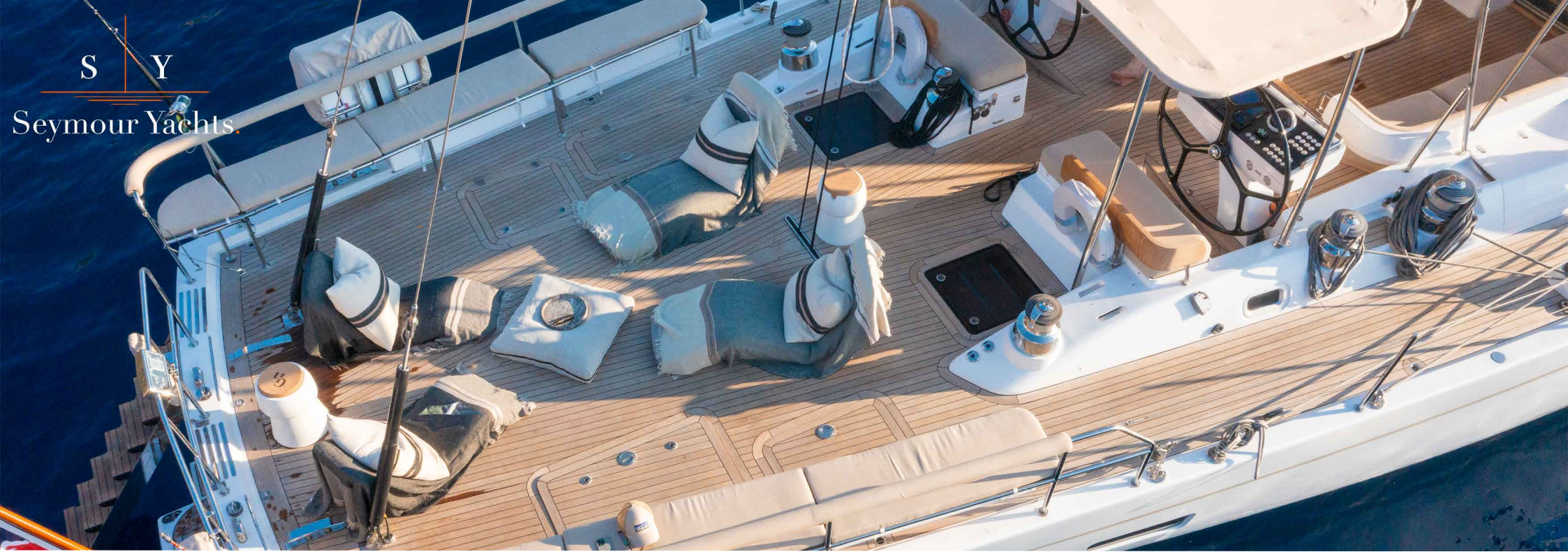
S Y

Seymour Yacht



S | Y

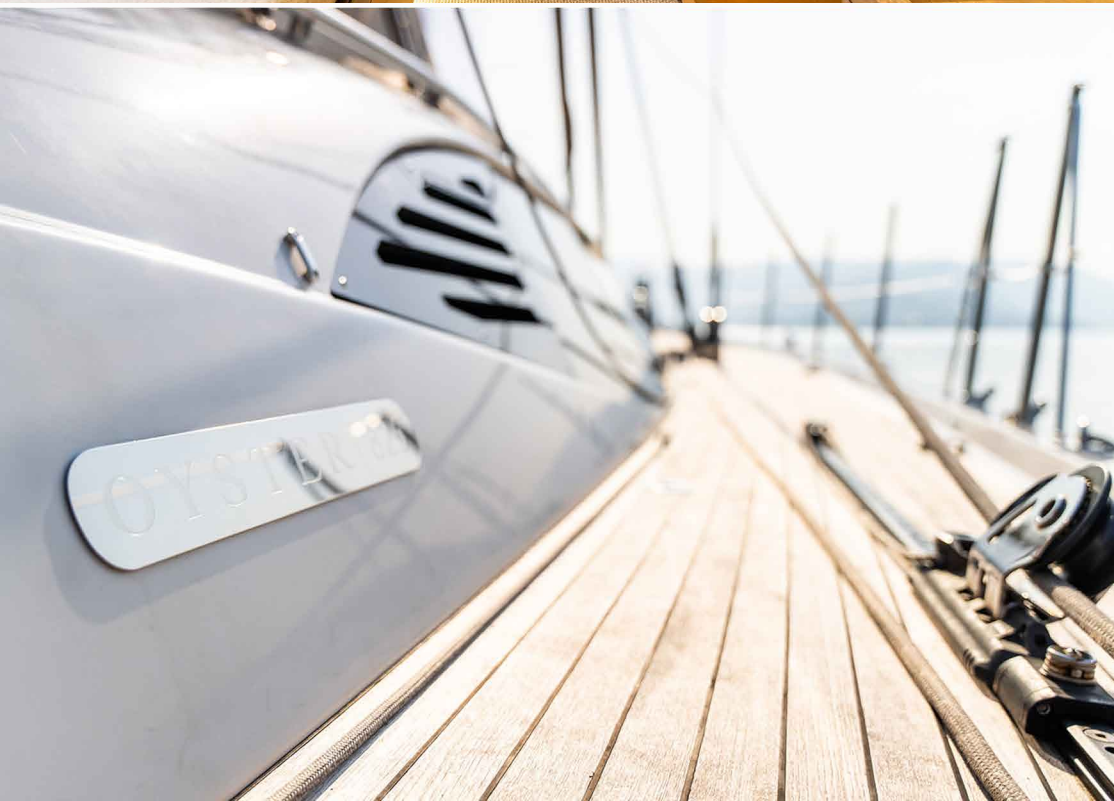
Seymour Yachts.



S | Y

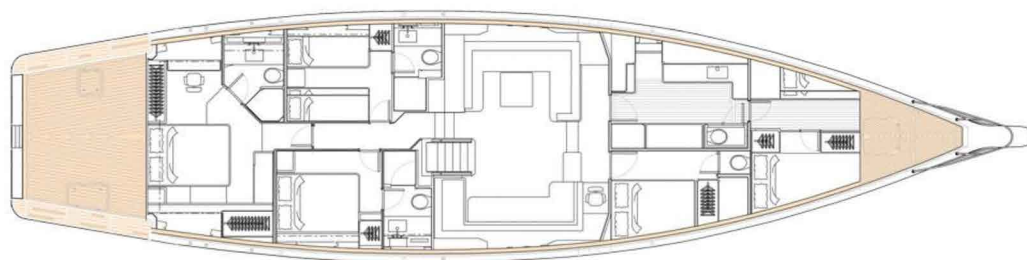
Seymour Yachts.





S | Y

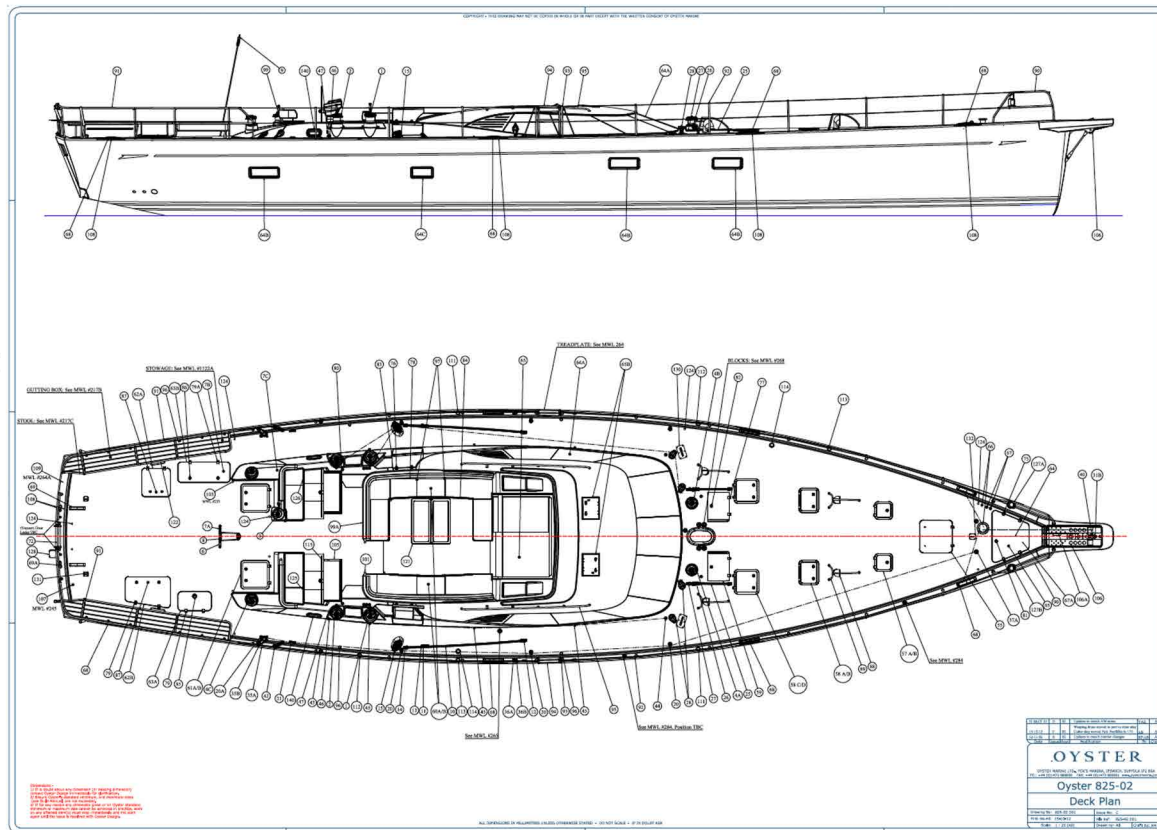
Seymour Yachts.



GENERAL ARRANGEMENT

Oyster 825-02

S/Y CHAMPAGNE HIPPIY.



Technical Data.

Builder	- OYSTER	Main Engines	- Scania DI09 350hp
Model	- 825-02	Mainsail	- Elvstrom furling SY EPEX Cruising 177.3m2 (new 2023)
Year of Construction	- 2014/19 - Refit 2022	Genoa	- Elvstrom furling SY EPEX Cruising 188.9m2 (new 2023)
Construction Material	- Hand laid composite	Staysail	- Elvstrom furling SY EPEX Cruising 83.9m2 (new 2023)
Length Overall (LOA)	- 26.20 / 21.98m (LWL)	Generators	- Onan 22.5KW & Onan 13.5KW
Maximum Beam	- 6.32m	Thrusters	- Hyrdraulic Bow and Stern
Maximum Draft	- 3.5 m	Mast	- Dokar 30M Aluminium with in mast furling
Gross Tonnage	- 76 T	Accomodation	- 9 Persons in 4 Cabins / 3 x Crew in 2 Cabins
Fuel Capacity	- 3,000 Ltrs	Location	- Barcelona, Spain
Fresh Water Capacity	- 2,000 Ltrs	VAT Status	- EU VAT Paid

Construction.

Hull Construction

- Traditional hand laid composite construction.
- Reinforcement schedule is calculated to meet or exceed the Det Norske Veritas (DNV) – High Speed and Light Craft Rule.
- designed and the finite element modelled and verified to exceed the requirements of the ISO 12215-9
- Outer NPG surface gelcoat is backed up with composite reinforcement using a combination of vinylester and polyester resin systems
- Below the waterline the hull shell is monolithic (single skin). Above the waterline the hull shell is cored.

Deck Finish

- Teak laid decks, rolled edged bulwark with clean GRP finish.
- Weather deck, cockpit seats and sole areas are finished with quarter-sawn teak planking with no visible fastenings.
- Stanchions and cleats mounted on the bulwark.
- Scupper drains installed along deck edge.

Keel

- High-performance bulb (HPB) with standard draft keel.

Rudder

- Twin rudders with substantial GRP foam-filled blades that are bonded to composite rudder stocks. Rudders dropped and serviced, May 2023.

- Vessel bulkheads are made from either marine grade plywood and/or foam-core as designed. Secondary structure in the keel floor area has been upgraded to an epoxy resin system with glass and carbon reinforcement.

Hull Finish

- White hull with Taupe cove and waterlines (Polished May 2023)
- Underwater sanded and repainted - antifouling “Black” (May 2023)

Deck Construction

- Moulded in GRP with a PVC foam cored structure for strength and insulation.

Stern Design

- Unique extended transom design
- Hydraulic transom door/swimming platform
- Unique teaked beach club/storage garage

Stern Design

- At over 24m length overall the Oyster 825 falls outside the scope of the EURCD, however the hull design and structure for this vessel have been designed using the Det Norske Veritas (DNV) – High Speed and Light Craft Rule.

Commercial Coding

- Re-built to MCA Category 0, now operating under MCA Cat 2

Deck Layout and Equipment.

Anchor

- 100Kg Ultra stainless steel anchor
- 100 Mt stainless steel 14mm chain (New 2019)
- Lewmar V8 vertical, chain gypsy, hydraulic 2-way anchor Windless (Serviced May 2023)
- Operated by adjacent foot switch controls
- Wired hand-held remote on spiral cable for operation of windlass with socket in anchor locker

Deck Access

- Removable folding stainless steel side boarding ladder with teak treads that can be used port and starboard with bulwark fittings to secure.
- Guard wires with pelican hooks
- Stainless steel stern pushpit with gate for boarding
- Emergency access from aft cabin deck hatch
- Besenzoni hydraulic transforming ladder passerelle in transom (new 2023).
- With control panel mounted in stainless box on aft pulpits.

Hatches

- Custom acrylic main companionway powered sliding hatch system.
- Short washboard to create a 300mm high sill for storm conditions (MCA compliant).
- 8 x GRP framed flush accommodation deck hatches.
- 2 x GRP framed flush storage area deck hatches (sail locker/lazarette).
- 2 x Size 44 flush escape hatches to port and starboard aft guest cabins, below cockpit seats.
- All hatches removed and re-sealed in May 2023••

- Extended stainless bimin covering cockpit and helm.
- Bimini fabric in Sunbrella Plus Taupe fabric (New May 2023)
- Covers for cockpit table, pedestals, and steering wheels in ‘Taupe’ Sunbrella Plus fabric (New May 2023)
- Cockpit and helm seat cushions in ‘Taupe’ Sunbrella Plus fabric (New May 2023)

Canvas Work

- Custom aised spray hood with removal panels and transparent windows. (New May 2023)
- Spray hood in Sunbrella Plus Taupe fabric (new May 2023)

Rig

- Cutter headed sloop rig (New 2023)
- Triple Spreader aluminium Dokar in furling Mast (New 2023) with formula masts aluminium boom (Resprayed white in 2023).
- Solid stainless steel rod rigging (fully serviced May 2023)
- Hydraulic in mast furling by Reckmann (Serviced May 2023)
- Hydraulic Yankee and Staysail furlers by Reckmann (Serviced May 2023)

Deck Layout and Equipment.

Rig Cont.

- 2 x Navtec A260 LE 030 hydraulic backstay tensioners with mechanical lock off (Serviced May 2023).
- Navtec A3850 VC 060 hydraulic vang with positive support (new May 2023).

Winches

- 2 x Lewmar 88/3 – Primary winches (serviced 2024)
- 2 x Lewmar 77/2 – Secondary winched (Serviced 2024)

- Dolphin Gennaker/Cruising Spinnaker. Code 3 in sock.
- Storm Jib and Trysail.

Engineering.

Thrusters

- 2 x GRP framed flush storage area deck hatches (sail locker/lazarette).
- 2 x Size 44 flush escape hatches to port and starboard aft guest cabins, below cockpit seats.
- All hatches removed and re-sealed in May 2023••

Thrusters

- Sleipner/Side Power hydraulic retractable bow thruster SRHP240/250TC (New May 2023)
- Sleipner/Side Power hydraulic retractable Stern thruster (Serviced May 2023)

- 2 x Lewmar 77/2 – Runner winches (Serviced 2024)
- 2 x Lewmar 77/2 – Halyard Winches (serviced 2024)
- 1 x Lewmar 68/2 – Mainsheet winch (Serviced 2024)

Sails

- Elvstrøm EMS Max SY EPEX Vectran Yarn Cruising 177.3m2 (New May 2023)
- Elvstrøm Furling Genoa 144% SY EPEX Vectran Yarn Cruising 188.9m2 (New May 2023)
- Elvstrøm Furling Staysail 73% SY EPEX Vectran Yarn Cruising 81.4m2 (New May 2023)

- Parts: Bow Thruster – Complete new unit kit.
- Stern thruster – Gearleg, drive shaft kit, lower drive shaft kit, main solenoid.

Watermaker

- SEA RECOVERY AQUAMATIC Fully Automatic Watermaker 900-1 COMPACT MEMBRANE 142 lit./hour. 220 VAC 50/60 Hz.

Generators

- 1 x Onan 22.5KW
- 1 x Onan 13.5KW

Navigation and Safety.

Navigation

- SIRS Marine major 150mm diameter magnetic steering compass
- 1 x Raymarine i70 display in captains cabin
- 8 x Raymarine i70 displays at forward end of cockpit in angled pods
- 1 x Raymarine 7' Axiom plotter
- 2 x Raymarine p70r pilot controls
- Raymarine AIS 700
- LCJ ultrasonic wind
- ICS Navtex 6 plus
- Raymarine CAM220 Camera radome day/night (New May 2023)
- Marinco Whistle Horn (New May 2023)
- Marinco search light SPL-12W (New May 2023)

Pot Pedestal:

- 1 x Raymarine p70r pilot control
- 2 x Raymarine i70 displays
- 1 x Raymarine e125 hybrid touch radar/plotter
- 1 x Raymarine Raymic 60/70

Starboard Pedestal:

- 1 x Raymarine p70r pilot control
- 2 x Raymarine i70 display
- 1 x Raymarine e125 hybrid touch radar plotter
- Starlink - Newly added October 2023
- 19 x Spinlock Deckvest lifejackets with UML MK5i Auto fring capsule, UM pro sensor Elite Auto fring capsule and Spinlock Pylon Lifejacket light, MED approved. With harnes
- Full coding approved first aid kit
- Full coding approved medical kit
- Torch in every cabin

- Fire extinguishers in every cabin, room and mechanical area ranging from 2kg -12kg.

Safety

- 1 x EPIRB GME 603 FG CAT 1 for main vessel
- 1 x EPIRB GME 603 FG CAT 1 for tender
- 1 x Jonbuoy
- 1 x Danbuoy
- 2 x 8P Liferfts
- SeaFire Engine room shutdown control system
- Fire blanket slim pack 1.1m x 1.1m

Navigation and Safety.

Navigation

- SIRS Marine major 150mm diameter magnetic steering compass
- 1 x Raymarine i70 display in captains cabin
- 8 x Raymarine i70 displays at forward end of cockpit in angled pods
- 1 x Raymarine 7' Axiom plotter
- 2 x Raymarine p70r pilot controls
- Raymarine AIS 700
- LCJ ultrasonic wind
- ICS Navtex 6 plus
- Raymarine CAM220 Camera radome day/night (New May 2023)
- Marinco Whistle Horn (New May 2023)
- Marinco search light SPL-12W (New May 2023)

Pot Pedestal:

- 1 x Raymarine p70r pilot control
- 2 x Raymarine i70 displays
- 1 x Raymarine e125 hybrid touch radar/plotter
- 1 x Raymarine Raymic 60/70

Starboard Pedestal:

- 1 x Raymarine p70r pilot control
- 2 x Raymarine i70 display
- 1 x Raymarine e125 hybrid touch radar plotter
- Starlink - Newly added October 2023
- 19 x Spinlock Deckvest lifejackets with UML MK5i Auto fring capsule, UM pro sensor Elite Auto fring capsule and Spinlock Pylon Lifejacket light, MED approved. With harnes
- Full coding approved first aid kit
- Full coding approved medical kit
- Torch in every cabin

• Fire extinguishers in every cabin, room and mechanical area ranging from 2kg -12kg.

Safety

- 1 x EPIRB GME 603 FG CAT 1 for main vessel
- 1 x EPIRB GME 603 FG CAT 1 for tender
- 1 x Jonbuoy
- 1 x Danbuoy
- 2 x 8P Liferfts
- SeaFire Engine room shutdown control system
- Fire blanket slim pack 1.1m x 1.1m

S | Y

Seymour Yachts.



Live the life you've earned.

Whilst the utmost care is taken in the preparation of the information and details on the Vessel, the accuracy of such information cannot be expressly or impliedly guaranteed. All information and details are intended as a guide only and are not binding and do not constitute part of any terms and conditions. Seymour Yachts offers the details of this Vessel in good faith and cannot guarantee or warrant the accuracy of this information nor expressly or impliedly warrant the condition of the vessel. Any prospective purchaser should instruct his agents, or his surveyors, to investigate such details in order to validate all information. This Vessel is offered subject to prior sale, price change, or withdrawal without notice. It is noted that this information may be displayed in various languages; however, the interpretation of the language that shall take precedence shall always be UK English.